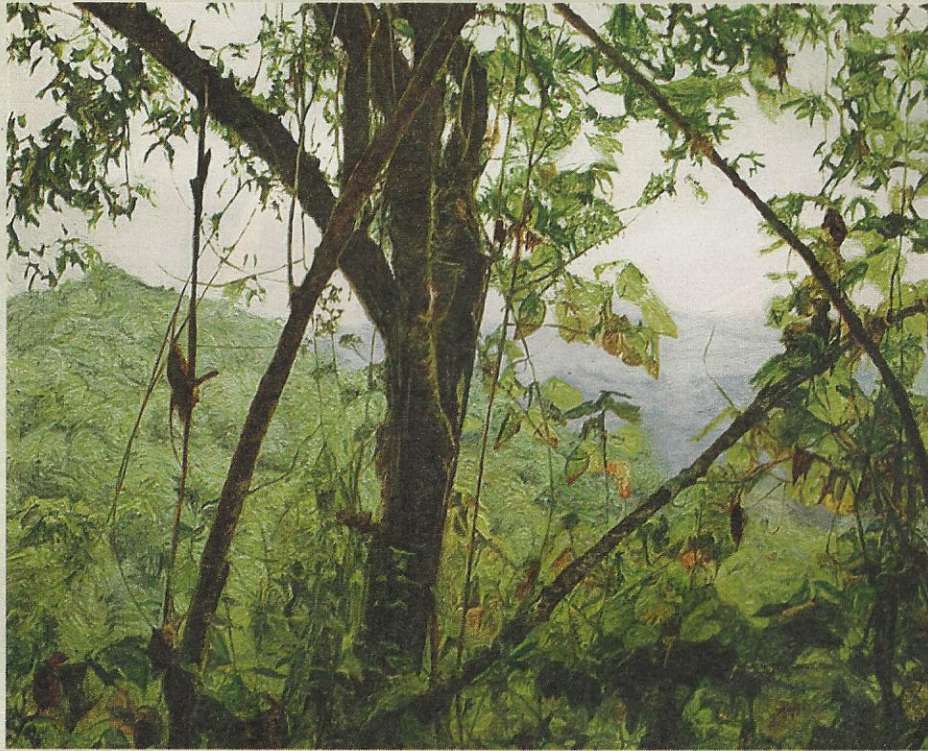


# CULTURE



## **Paul McKinley — Operation Turquoise**

There is a hyper-real, almost psychedelic intensity to the paintings in Paul McKinley's new show. Thick, impenetrable jungle scenes hang alongside aerial views in which jigsaw patterns form as cracks appear in pink or tangerine lava flows. Dramatic purple sunsets illuminate bodies of dark water; yellow-orange leaves glow against a clear blue sky. The moss-draped boughs and luminous green undergrowth of Epiphytes and the feathery grasses and foliage of Middle of Gishwati imply a visual fascination with the verdant natural world. All are based

on photographs taken in Rwanda by a Trinity College ecologist. Works in oil on canvas are offset by two black-and-white drawings of a coolly observant chimpanzee and a fiercely confrontational shoebill. In the show's final composition, scumbled paint sits in the empty eye sockets and gaping nasal passage of Skull: a single object on a plain-blue background, no jaw, missing teeth. These are striking images of violence and beauty, hidden and found in a foreign land.

**Cristín Leach Hughes**

*Kevin Kavanagh Gallery, Tue-Sat  
10.30am-5.30pm 01 475 9514*